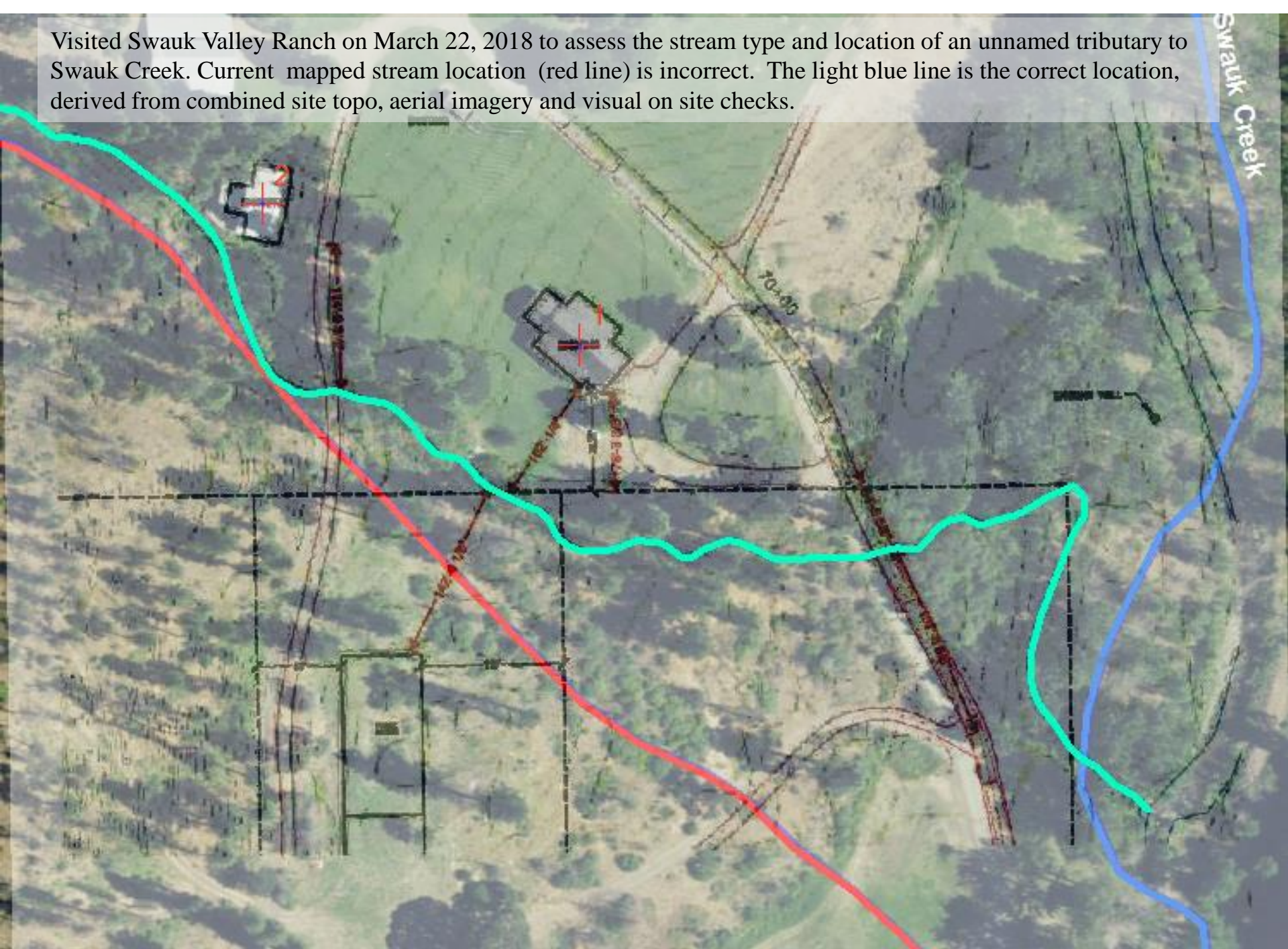



Visited Swauk Valley Ranch on March 22, 2018 to assess the stream type and location of an unnamed tributary to Swauk Creek. Current mapped stream location (red line) is incorrect. The light blue line is the correct location, derived from combined site topo, aerial imagery and visual on site checks.







Outside of the immediate housing area,  
the stream location was corrected to  
Reflect the true stream location. None of  
the side tributaries were checked.





Location of currently mapped stream location looking up the mapped stream. Stream is mapped across the lawn and brush, no signs of stream.



Actual location of stream and condition. It meets the physicals for a fish bearing stream and has good connection to Swauk Creek. Stream is seasonal, going dry in May according to locals, but is likely used by fish during the seasonal period. Thus it is a Type F stream, borderline between a Type 2 and 3 stream under the old labels.

